

CONSTRUCTION & FACILITIES MAINTENANCE



Program Description:

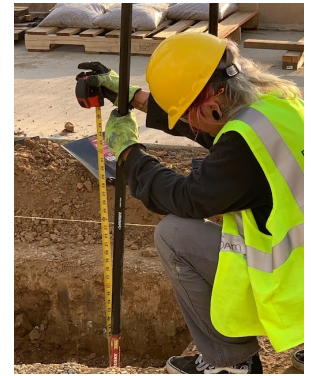
Construction and Facilities Maintenance is designed to prepare students for entry-level employment. The program includes instruction in blueprint reading, construction math, industry specific vocabulary, and pre-employment skills. Students will learn proper maintenance and use of tools, equipment, and materials related to industry. Additional topics such as personal health, worksite safety, physical agility and strengthening ensure students understand the importance of safety and the physical abilities required for employment. Activities in the course include work-based learning that connects students to industry, local community, and local apprentice programs. Students will be required to complete 3.5 hours of independent study outside of class each week.

300 Hours (180 Classroom Hours/120 Hours Work Based Learning)

LOCATION	IN PERSON CLASSROOM	REQUIRED ORIENTATION	START	END	FEES	REQUIRED 1st AID/CPR
Yucaipa Adult School 12358 #B 6th St. Yucaipa, 92399 Room 6	5:00pm-8:30pm T & Th Plus 3.5 hours weekly independent study required (20 weeks)	Required New Program Orientation on 02/01/2024 at 5:00- 7:00pm	02/06/24	06/27/24	\$50 Registration Fee Fee Waiver available to those who qualify and to partnering agencies	8:00am-4:00pm 03/02/24, Saturday First Aid/CPR/AED Held at CRY-ROP Campus

Certificates Earned (with a score of 80% or better on each):

- S/P 2-Construction Safety and Hazardous Materials
- S/P 2-Soft Skills Training for Career Technical Education
- OSHA 10
- First Aid/CPR/AED American Heart Association
- Target Solutions: Anti-Harassment Training
- Southwest Carpenters Union Pre-Apprentice Certifications (I & II)



PARTNERSHIP BETWEEN



CONSTRUCTION & FACILITIES MAINTENANCE

Enrollment Process:

Step 1. Contact Student Services Staff at 909-793-3115 ext. 500 or go to our website at cryrop.org, to Adult Classes, to Adult Career Technical Education Programs, to Adult Program, to Interest Form and complete

or Go to yas.yucaipaschools.com to register and complete the registration forms found on-line.

Step 2. Schedule and take an assessment at Yucaipa Adult School. Test allows us to learn more about your academic knowledge.

Step 3. Finish the Registration Process by completing all on-line registration forms. Once completed you will receive a registration confirmation and a request to pay \$50. The fee can be paid online. A fee waiver is available to those that qualify or if referred from a partnering agency.



Program Requirements:

- Must be an adult student, not required to have a high school diploma.
- Recommended: Students should have a social security card or right to work document and a valid legal I.D.
- Ability to perform required essential functions of a construction worker including safety standards, good physical health & ability to lift 100 lbs
- Must attend class sessions as scheduled & work-base learning is a required part of the program

TOPICS INCLUDED IN THE PROGRAM

- | | | |
|----------------------------|-------------------------------|----------------------------------|
| • Electrical | • Site Preparation | • Communication Skills |
| • Solar Tech | • Drywall & Insulation | • Interpersonal Skills |
| • Construction Math | • Effective Use of Tech | • Employability Skills |
| • Asbestos | • Nail, Fasteners & Adhesives | • First Aid/CPR/AED |
| • Hand Tools | • Cutting & Shaping Tools | • Personal & Occupational Safety |
| • Wood | • Stationary Tools | • Physical Agility |
| • Overview of Construction | • Portable Power Tools | • Regulatory Constraints |

What types of jobs will I be qualified for?

Laborer Assembler Maintenance Worker Project Coordinator Facilities Maintenance Worker

**THIS IS AN EQUAL OPPORTUNITY PROGRAM
AUXILIARY AIDS & SERVICES ARE AVAILABLE UPON
REQUEST FOR INDIVIDUALS WITH DISABILITIES**

**Colton Redlands Yucaipa ROP
1214 Indiana Ct.
Redlands, CA 92374
(909) 793-3115 Ext. 500
www.cryrop.org**



**Yucaipa Adult School
12358 #B 6th St., Rm 6
Yucaipa, CA 92399
(909) 790-6192
www.yucaipaschools.com**